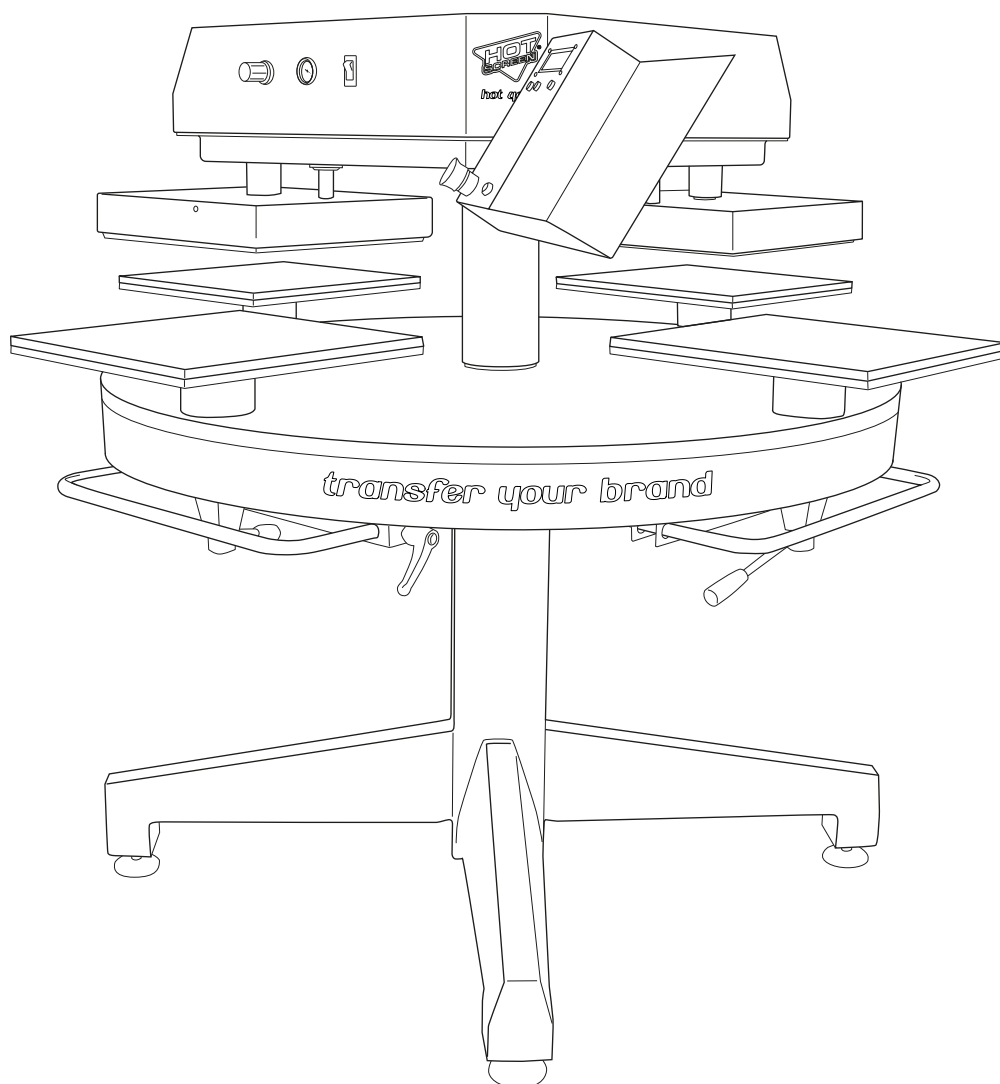


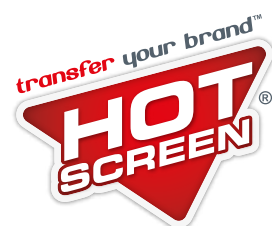
HOT 4000

USER MANUAL

Version 2.1



This manual shall be read in its entirety before using the machine.



IMPORTANT SAFETY INSTRUCTIONS

When using Hot 4000, basic precautions should always be taken, including the following:

1. Follow the instructions to reduce the risk of burns, fire, electric shock or other injuries.
2. Do not let Hot 4000 come in contact with water or other liquids to avoid the risk of electric shock.
3. Disconnect Hot 4000 from the power outlet when cleaning or leaving the machine unattended.
 - Turn the power switch to the position “O” to turn off your Hot 4000 and take hold of the power cord and unplug it from the power outlet. **Do not pull the cord.**
4. Connect Hot 4000 directly to the power outlet, or use an approved 10 Ampere extension cord.
5. Never use Hot 4000 if it has a damaged cord or plug, if it has been damaged or if water has been spilled on it. Contact our heat press service for examination, repairs or mechanical adjustments.

*** Only use Hot 4000 for the intended applications that are described in the user manual.**

The contents in this user manual and the specifications for this product can be changed without prior notice.

*** For further product information and updates, visit our homepage <http://hotscreen.se>**



HEAT PRESS SERVICE

Ph: 0300-52 12 63
Mobile: 0724-02 16 79
Mail: service@hotscreen.se



CUSTOMER SERVICE

Contact centre: 0300-56 89 90
Mail: info@hotscreen.se

SAVE THESE INSTRUCTIONS!

TABLE OF CONTENTS

Safety instructions	2
Intended uses	4
Placement.....	4
Connecting the machine.....	4
Risks of injury	5
Rotating table	5
Other known risks	5
Starting the machine - main switch.....	5
Using the machine.....	6
Preheating garments.....	6
Changing the work table	6
Support bracket for heavier garments.....	7
Adjusting the machine's height.....	7
Managing settings	8
Menu for setting the temperature.....	9
Menu for setting the time.....	10
Menu for setting the counter	11
Pressure regulator	12
Pressure on the plate	12
Safety measures	13
Emergency stop	13
Function test	13
Safety watch "Watchdog"	13
Maintenance.....	13
Hot 4000 data	14
Delivery	15
Warranty	15
Manufacturer	15
Declaration of Conformity	16

INTENDED USES

The machine is only intended for the application of heat transfers with hot-melt adhesive glue on textile garments. The machine is especially developed for Hot Screen's heat transfers, but it naturally also works with heat transfers from other producers, as long as the settings are within the specifications for the machine.

PLACEMENT

HOT 4000 shall be weighed in with the pass, note that there are adjustment screws on the four legs. There should be large work surfaces on both sides of the machine, or room for a rolling table. HOT 4000 shall not be placed in areas that are colder than 10°C or hotter than 35°C. The machine shall be placed in a dry area and must not be used outside.

CONNECTING THE MACHINE

Voltage: HOT 4000 shall be connected to a protective grounded power outlet with its own safety group with a 10 Ampere delay fuse and 210-240 volt AC.

If an extension cord is used, it should be approved for 10 Ampere.

Compressed air: The machine must be connected with a ½ "quick coupling minimum 5bar, maximum 8bar.

Attention! There should be water separators for the air that supplies the machine with compressed air, in order to avoid getting water in the system and shortening the lifespan of the compressed air components.

When you connect the compressed air, the heat plate will immediately rise up.

 **Risk of crushing.**

Safety: The machine is equipped with two different safety functions to prevent and avoid accidents.

1. **Emergency stop:** The large red button on the control panel. Interrupts all electricity, the heat plate and the cold plate lift when the button is activated/pushed.
2. **Overcurrent protection** If something obstructs/blocks the rotating table, the current breaks and the rotating table stops.

Please note, to reset the machine after the security functions have been resolved, it is necessary to completely restart the machine from the main switch.

RISKS OF INJURY

There is a risk of burns and crush injuries as the heat plate on the machine and also the protective cover above the heat plate can reach very high temperatures, so it must be ensured that only authorised personnel has access to the machine.

No body parts may come between the heat plate and the working table when the machine is switched on. Garments can only be replaced on the two open work tables/stations.

ROTATING TABLE

The heat press is equipped with a rotating table and it is important that the area where the table moves is clearly marked and that no one stays inside the marked area when the machine is in operation.

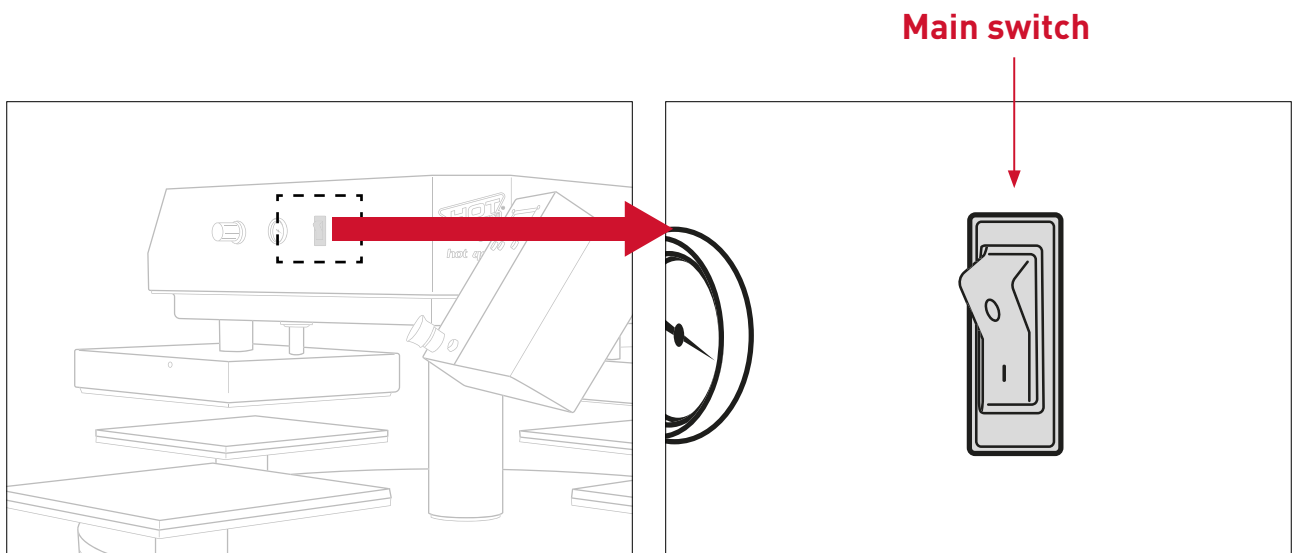
OTHER KNOWN RISKS

Decals of unknown quality and decals not intended for heat application should not be used, due to gas development and fire hazard. Only textiles, and textiles that are approved by the manufacturer for the heat application of decals, can be used with the machine.

- The machine must not be covered.
- The machine must not be left in operation in unsupervised premises.
- The machine must not be washed with water, just wiped with a damp cloth.
- The machine must not be lubricated with oil or other lubricants except in the specified service purpose.

STARTING THE MACHINE - MAIN SWITCH

The machine is started by pressing the switch into the position “1”. The button lights up and the microprocessor starts and the display turns on. To turn off the machine, press the switch into the position “0”. The button turns off and so does the machine’s display.



USING THE MACHINE

To activate the machine, press on the small red button on the control panel. The table begins to rotate and the heat plate in the operator's place rotates and descends automatically when the work table is in the right position.

It is worth noting that there is a built-in guard that prevents the heat plate from descending before the set value is reached "Temp too low"

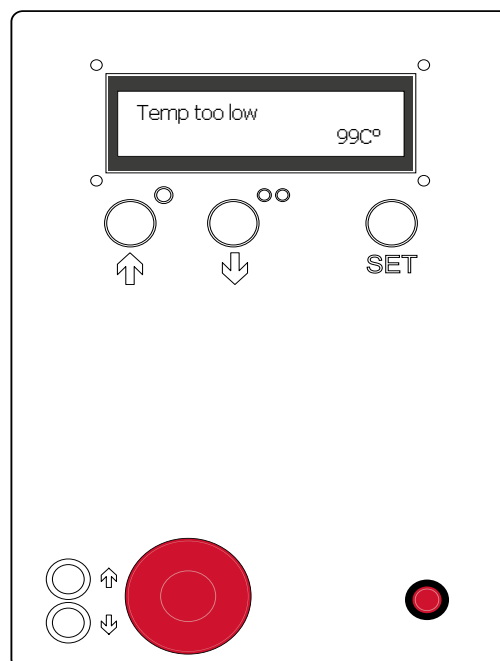
(If the heat plate's temperature differs in more than +/- 5 degrees Celsius from the set value, the carousel table does not spin. An error message is shown on the display, "Temp too high" or "Temp too low".)

PREHEATING GARMENTS

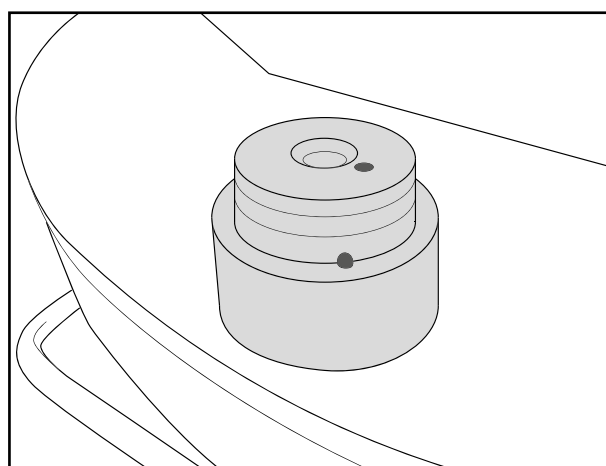
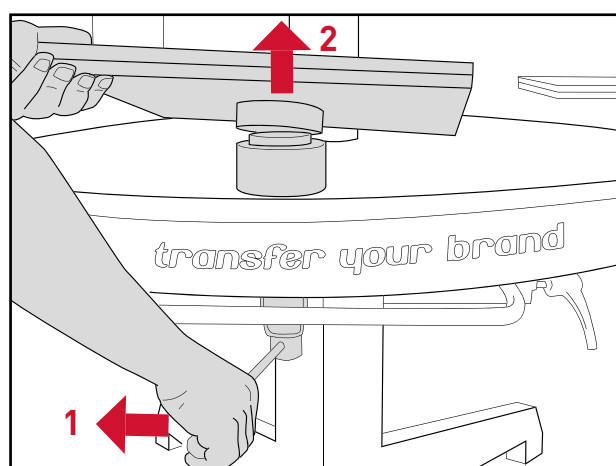
Sometimes it can be necessary to preheat/preshrink garments. This is easy to do by pressing the control button once before the set time cycle is complete, the cycle is cancelled. The display shows **"Cut"**, the heat plate rises and the table with the preheated garment rotates back to the operator's place.

Continuous Rotation of the Work Table:

If the Operator wants the table to rotate by more than 90 degrees, he or she must continue to press the red button. The work table then continues to rotate until the button is released.



CHANGING THE WORK TABLE



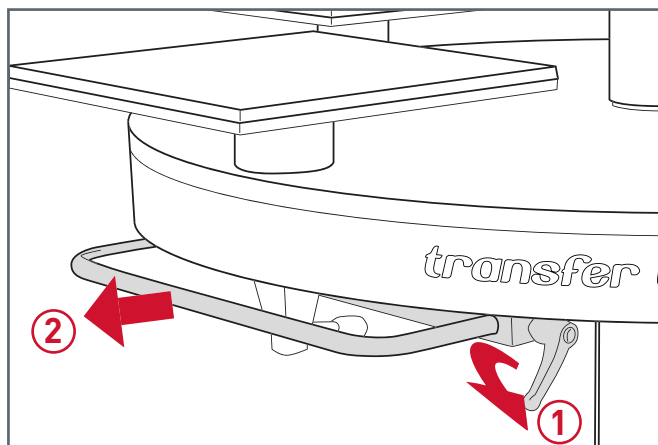
(Can only be performed when the station is open)

When the work table shall be dismantled: Dismount the work table by turning the lever on the lower side of the carousel counterclockwise. Lift the work table straight up. When the work table shall be mounted: Place the work table on its round holder. Slowly rotate the work table until the control pin falls into one of the four control holes. Then tighten the work table by rotating the lock lever clockwise.

SUPPORT BRACKET FOR HEAVIER GARMENTS

On the lower side of the carousel, there is a bracket at each work table that can be pulled out by turning the knob on the right side of the bracket.

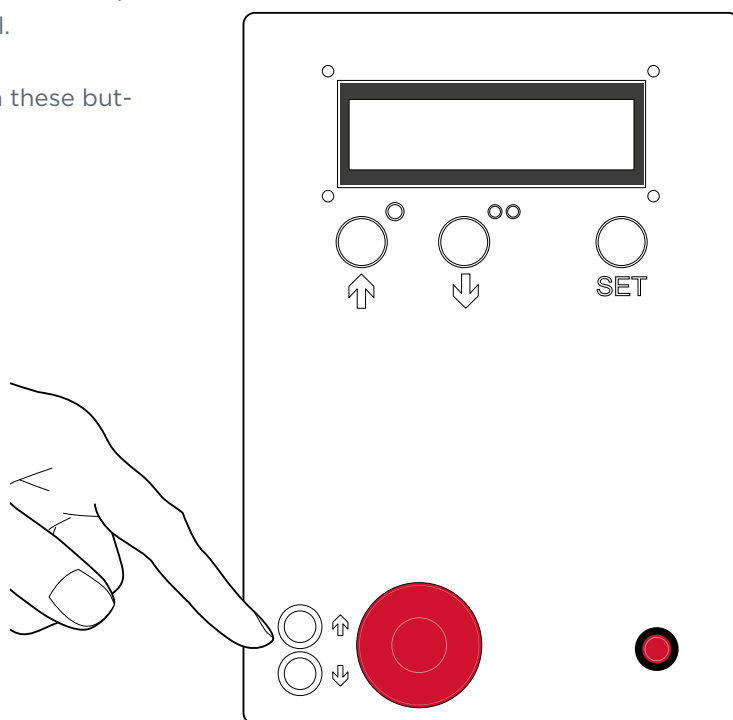
This bracket is especially helpful when the heat transfer shall be done on heavier garments. By pulling out the bracket and resting the garment on the bracket, you prevent the garment from moving / falling off the heating table when the table rotates.



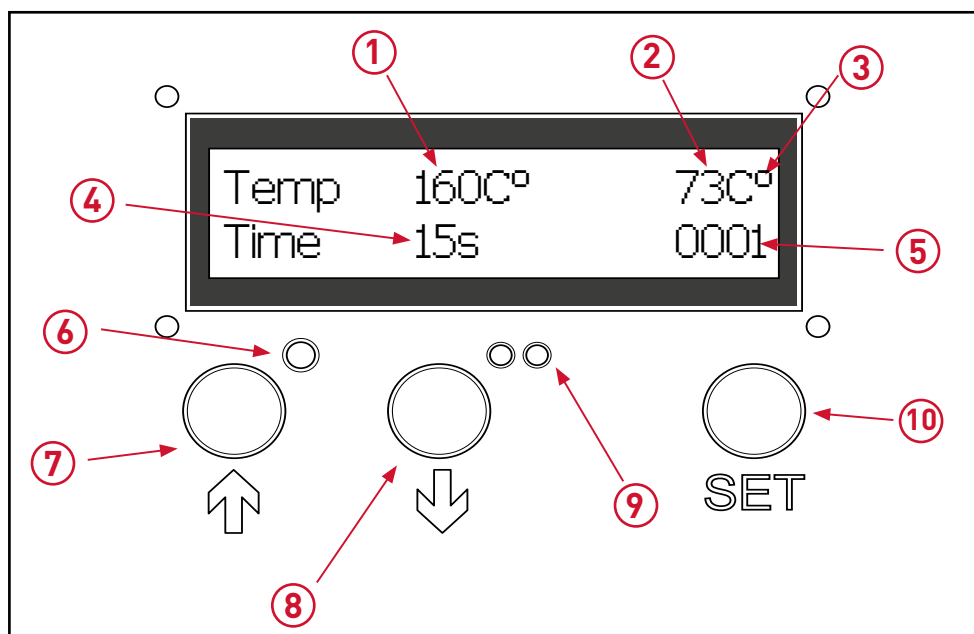
ADJUSTING THE MACHINE'S HEIGHT WITH BUTTONS ON THE CONTROL PANEL

The machine's work height can be adjusted with the help of two buttons to the far left of the control panel.

The work table can be adjusted vertically with these buttons from 95cm to 115cm from the ground.



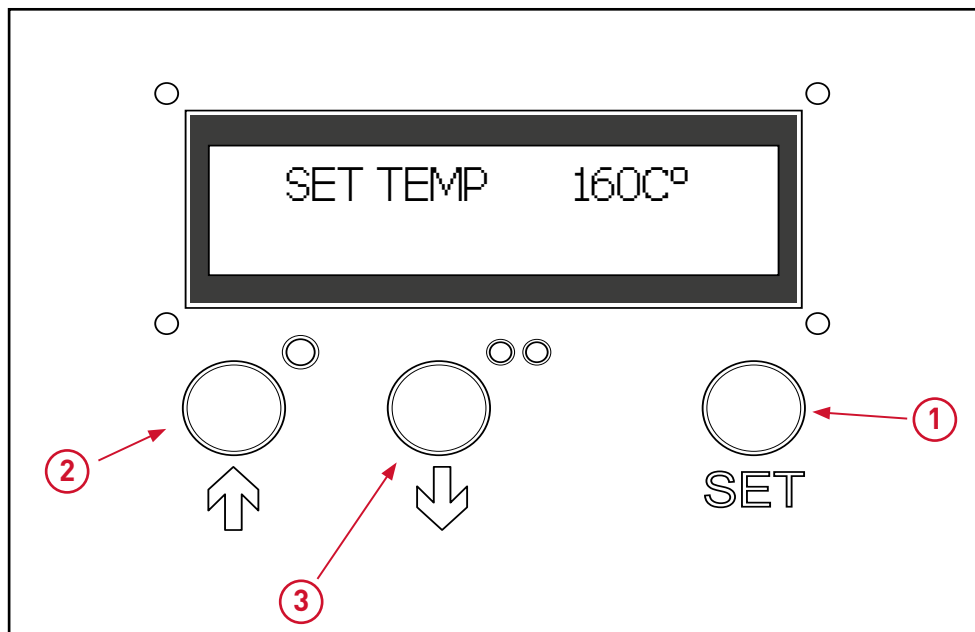
MANAGING SETTINGS



MAIN MENU - WORKING MENU

- | | |
|---|---|
| <p>① Set temperature
Shows set temperature. (Setpoint value)</p> | <p>⑥ Heat indicator
Shows when the heat of the heat plate is switched on</p> |
| <p>② Actual temperature
Shows the real temperature. (Real value)</p> | <p>⑦ Down arrow
Press to decrease</p> |
| <p>③ Degrees
This sign flashes to show that the electronics are active</p> | <p>⑧ Up arrow
Press to increase</p> |
| <p>④ Time
Shows set time</p> | <p>⑨ Cycle indicator
Shows if a cycle/heating is in progress</p> |
| <p>⑤ Counter
Shows number of completed cycles/heating</p> | <p>⑩ Settings button
Push to scroll the menus</p> |

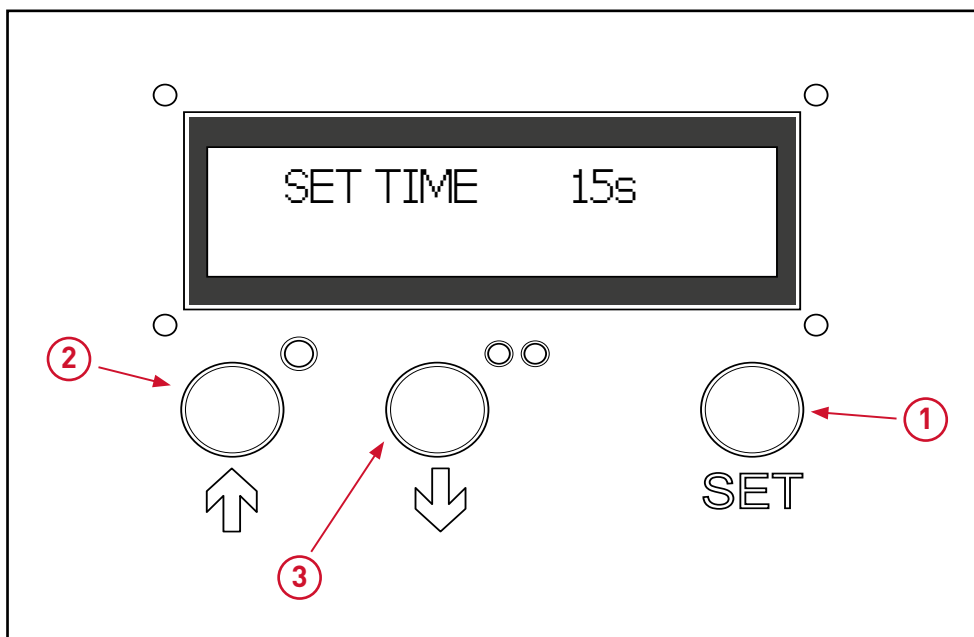
MENU FOR SETTING THE TEMPERATURE



-
- Menu for setting the temperature**
- 1** To access this menu press Set once. If you don't move any of the buttons, the menu automatically returns to the work menu.
- Increase temperature**
- 2** To increase the temperature, push on the up arrow oncelf you hold the button down, the value increases continuously.
- Decrease temperature**
- 3** To decrease the temperature, push on the down arrow, this too is continuous if you hold the button down.

When the menu goes back to the work menu, the set temperature will appear on the display.

MENU FOR SETTING THE TIME



Menu for setting the time

- ① If you push the Set button twice, you will reach the setting for the time in which the heat plate shall press down on the garment.

Increase time

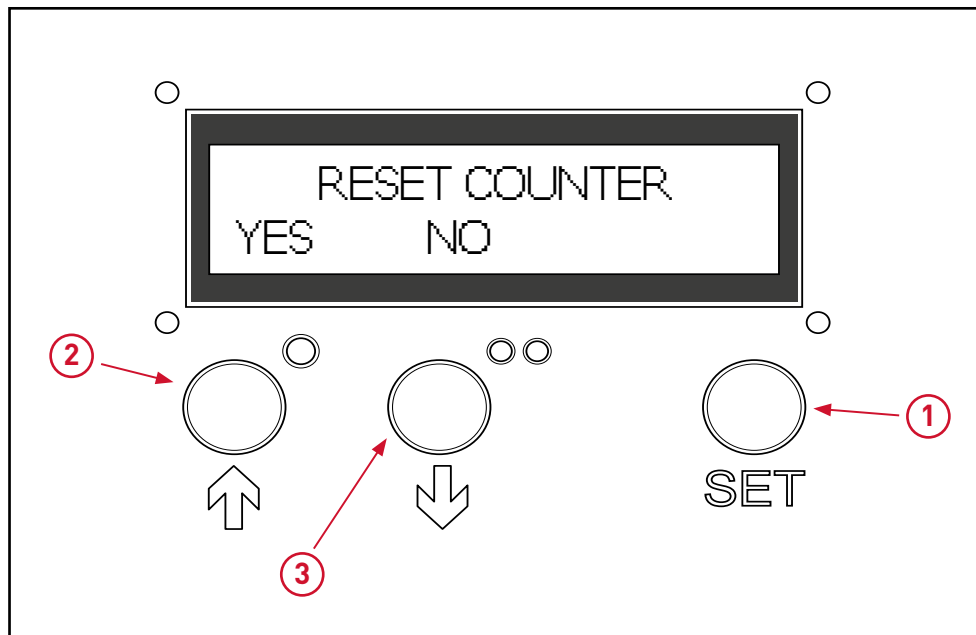
- ② To increase the time, push on the up arrow once if you hold the button down, the value increases continuously.

Decrease time

- ③ To decrease the time, push on the down arrow, this too is continuous if you hold the button down.

When the menu goes back to the work menu, the set time will appear on the display.

MENU FOR RESETTING THE COUNTER

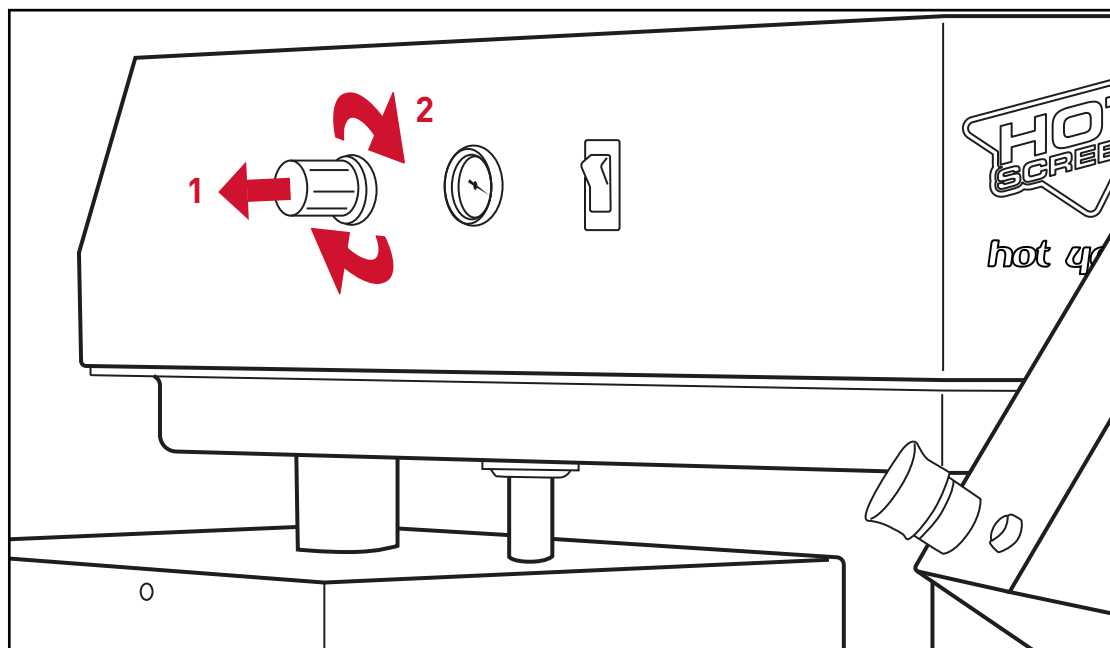


Menu for resetting

- ① If you push the Set button three times, you reach the menu for resetting the counter, the menu does **not** return automatically.
- ② If you push on the down arrow, you are saying “No” which means that you do not reset the counter, the menu now returns to the working position.
- ③ If you push “Yes” with the up arrow, you reset the counter and the menu returns to the working position, now showing “0000” in the counter.

When the menu goes back to the work menu, the reset counter will appear on the display.

PRESSURE REGULATOR



HOT 4000 is equipped with a pressure regulator and a manometer to read the pressure in the internal compressed air system.

The pressure regulator and the manometer are placed at the front of the hood. The pressure regulator is used to regulate the pressure on the heat plate.

PRESS THE PLATE TO 6 BAR ON THE PRESSURE METER

Size	Area cm ²	Pressure kg/cm ²
Large plate 38x38 cm	1444	0.3
Medium plate 38x15 cm	570	0.7
Small plate 15x15 cm	225	1.9

When using heat transfers manufactured by Hot Screen, 5-6 bar is a good setting that works on all plates despite the relatively large difference in pressure with different sizes on the work table.

SAFETY MEASURES

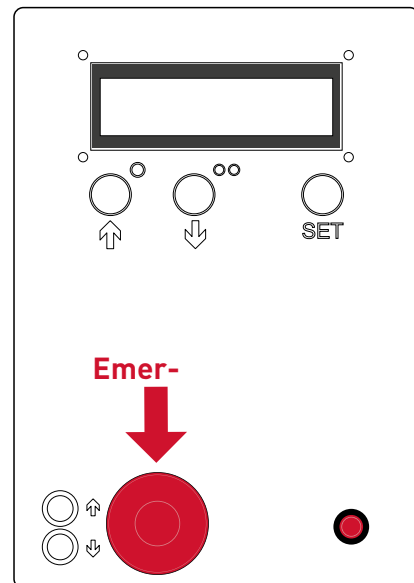
EMERGENCY STOP

The emergency stop breaks all electrical circuits and the heat plate rises up. The emergency stop is reset by pulling the button straight up.

Before resetting it, you must make sure that the cause of the fault has been resolved.

FUNCTION TEST

Before each operation of the machine, check that the emergency stop is working so that all parts of the machine are turned off.



SAFETY WATCH "WATCHDOG"

The machine's electronics are equipped with a watch that recognises if the program or the microprocessor aren't working as they should, in that case it turns off all further functioning such as shutting down the heat plate and heating it up.

The watch is reset by turning the machine off and waiting 10 seconds to turn it on again. If the error persists, all functions will reset and a Hot Screen AB service technician should be contacted.

MAINTENANCE AND SERVICE

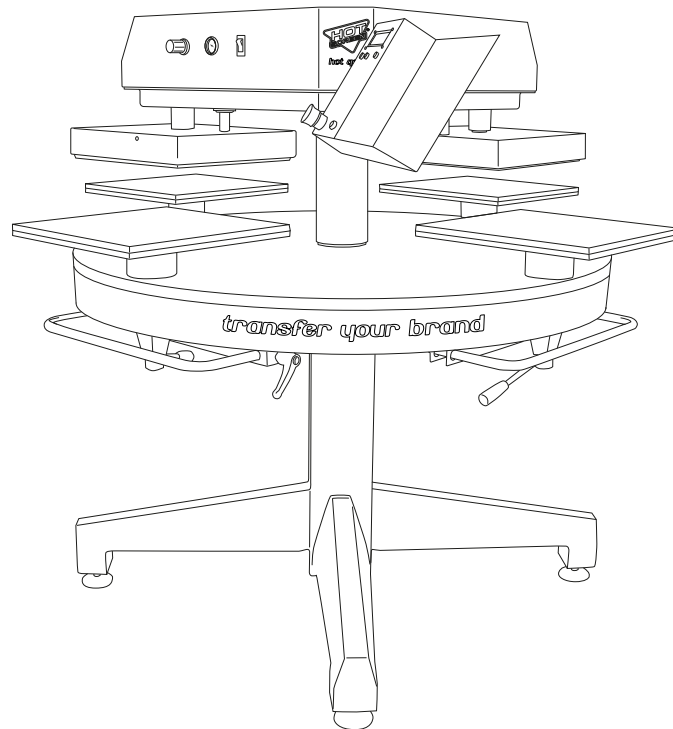
The machine's piston rod shaft should be lubricated to maximise its lifespan, the shaft should be lubricated at least once a week, if the machine is used for 8 hours a day.

The lubricant must be of a type that can withstand at least + 250 ° C. The machine is lubricated when cold, disconnect the compressed air connection and interrupt the power, the pressure plate lowers automatically.

Apply a thin layer of grease on the whole shaft. When you connect the compressed air again, the heat plate will immediately rise up again.

 **Warning for risk of crushing.**

HOT 4000 DATA



SPECIFICATIONS

- **Weight:** 300kg
- **Height (highest):** 1600mm
- **Height (lowest):** 1400mm
- **Diameter:** 1500mm
- **Depth:** 830mm
- **Effect:** 2200W
- **Voltage:** 210-240 vac 50-60hz
- **Main fuse:** 10 A delay
- **Min. pressure:** 1 bar
- **Max. pressure:** 6 bar
- **Min. heating time:** 1 sec
- **Max. heating time:** 60 sec
- **Max. temperature:** +200°C
- **Heat plate width:** 380mm
- **Heat plate depth:** 410mm
- **Large work table:** 380 x 380mm
- **Medium work table:** 150 x 380mm (optional)
- **Small work table:** 150 x 150mm
- **Noise level:** < 70 dba 1m

DELIVERY

Hot 4000 is delivered with the following:

- 1 power cord
- 1 air hose with quick coupler 1st
- 4 heating tables 380 x 380 mm
- 4 heating tables 150 x 150 mm
- 1 manual

WARRANTY

1 year warranty on all the components, starting from the delivery date.

Freight, per diem, and travel expenses are charged for warranty repairs if required.

MANUFACTURER, PRODUCER

HOT SCREEN AB
Gunneshårdsvägen 2
439 74 Fjärås
Sweden
Telephone: 0300-56 89 90
Fax: 0300-779 95
Email: info@hotscreen.se

<http://www.hotscreen.se>

DECLARATION OF CONFORMITY

We,

Hot Screen AB
Gunneshgårdsvägen 2
439 74, FJÄRÅS, Sweden

Declare under our sole responsibility that the product Hot 4000 Heat transfer press, to which this declaration relates is in conformity with the following EU directives

The Directive 2006/42/EC on machinery (MD)

The Low Voltage Directive (LVD) 2006/95/EC

The EMC (ElectroMagnetic Compatibility) Directive 2004/108/EC

The following harmonized standards are used:

MD:

EN 12100-1 (2003)
EN 12100-2 (2003)
EN 13857 (2008)
EN 60204-1 (2006)

LVD:

EN 60335-1
EN 60335-2

EMC:

EN 55022
EN 61000-4-2
EN 61000-4-4
EN 61000-4-5
EN 61000-4-6

Fjärås, Sweden 2017-10-01



Fredrik Skanselid
CEO - Hot Screen AB

