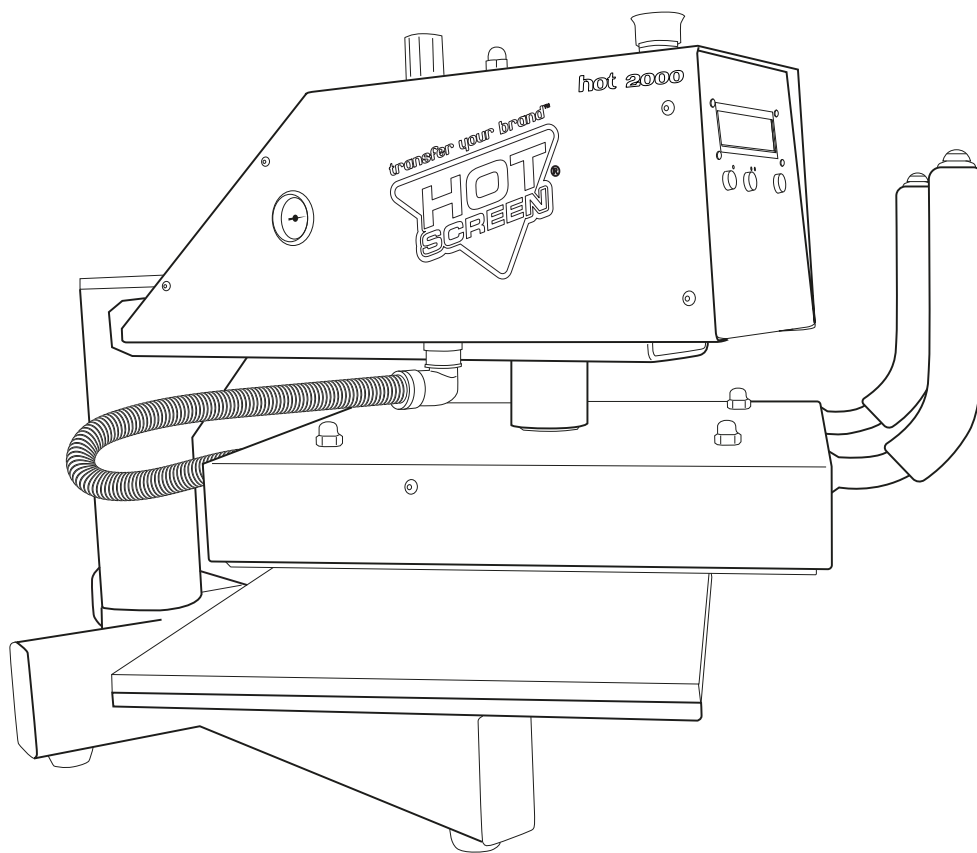


HOT 2000

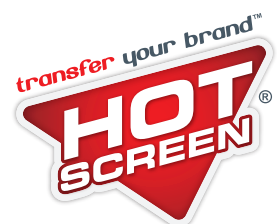
USER MANUAL

Version 3.1



CE

This manual shall be read in its entirety before using the machine.



IMPORTANT SAFETY INSTRUCTIONS

When using Hot 2000, basic precautions should always be taken, including the following:

1. Follow the instructions to reduce the risk of burns, fire, electric shock or other injuries.
2. Do not let Hot 2000 come in contact with water or other liquids to avoid the risk of electric shock.
3. Disconnect Hot 2000 from the power outlet when cleaning or leaving the machine unattended.
 - Turn the power switch to the position “O” to turn off your Hot 2000 and take hold of the power cord and unplug it from the power outlet. **Do not pull the cord.**
4. Connect Hot 2000 directly to the power outlet, or use an approved 10 Ampere extension cord.
5. Never use Hot 2000 if it has a damaged cord or plug, if it has been damaged or if water has been spilled on it. Contact our heat press service for examination, repairs or mechanical adjustments.

- **Only use Hot 2000 for the intended applications that are described in the user manual.**
- **The contents in this user manual and the specifications for this product can be changed without prior notice.**
- **For further product information and updates, visit our homepage <http://hotscreen.se>**



HEAT PRESS SERVICE

Ph: 0300-52 12 63
Mobile: 0724-02 16 79
Mail: service@hotscreen.se



CUSTOMER SERVICE

Contact: 0300-56 89 90
Mail: info@hotscreen.se

SAVE THESE INSTRUCTIONS!

TABLE OF CONTENTS

Safety instructions	2
Intended uses	4
Placement.....	4
Connecting the machine.....	4
Risks of injury	5
Other known risks	5
Starting the machine - main switch.....	5
Using the machine	6
Two-hand grip.....	6
Changing the work table	6
Preheating garments.....	6
Managing settings	7
Menu for setting the temperature.....	8
Menu for setting the time.....	9
Menu for setting the counter	10
Pressure regulator	11
Pressure on the plate	11
Safety measures	12
Emergency stop.....	12
Function test	12
Safety watch “Watchdog”	12
Maintenance.....	12
Connection.....	12
Troubleshooting	13
The machine doesn’t start.....	12
Control of compressed air.....	12
Hot 2000 data	14
Delivery	15
Warranty	15
Manufacturer	15
Declaration of Conformity	16

INTENDED USES

The machine is only intended for the application of heat transfers with hot-melt adhesive glue on textile garments. The machine is especially developed for Hot Screen's heat transfers, but it naturally also works with heat transfers from other producers, as long as the settings are within the specifications for the machine.

PLACEMENT

HOT 2000 shall be weighed in with a pass. Should be bolted onto a steady flat table with a hard surface. Also, the table should have a convenient working height (75-90 cm for a standing working position, preferably adjustable in height).

Alternatively, the machine can be fastened to our height-adjustable stand. The machine's work table is placed 20 cm over the surface on which the machine is placed. There should be large work surfaces on both sides of the machine, or room for a rolling table.

HOT 2000 shall not be placed in areas that are colder than 10°C or hotter than 35°C. The machine shall be placed in a dry area and must not be used outside.

CONNECTING THE MACHINE

Voltage: HOT 2000 shall be connected to a protective grounded power outlet with its own safety group with a 10 Ampere delay fuse and 210-240 volt AC. The control for the height-adjustable stand for the HOT 2000 can be connected to the same protective grounded group. If an extension cord is used, it should be approved for 10 Ampere.

Compressed air: The machine must be connected with a ½ "quick coupler minimum 5bar, maximum 8bar.

Attention! There should be water separators for the air that supplies the machine with compressed air, in order to avoid getting water in the system and shortening the lifespan of the compressed air components.

When you connect the compressed air, the heat plate will immediately rise up.

 **Risk of crushing.**

Safety: The machine is equipped with two different safety functions to prevent and avoid accidents.

- 1. Emergency stop:** The large red button on top of the machine. Interrupts all electricity, the heat plate rises when the button is activated/pushed (see p. 12).
- 2. Two-hand grip:** The two-hand grip is constructed so that it is necessary to press both buttons on both handles with a maximum interval of 0.2 seconds for the machine to become active and the heat plate to press down (see p. 6).

RISKS OF INJURY

As the heat plate on the machine and also the protective cover above the heat plate can reach very high temperatures, only authorised personnel should have access to the machine.

Attention! No body parts between the heat plate and the working table when the machine is switched on. When replacing the garment, the arm with the heat plate shall be in the position opposite the work table on which the garment is changed.

The machine shall be turned off and disconnected when the work table is moved.

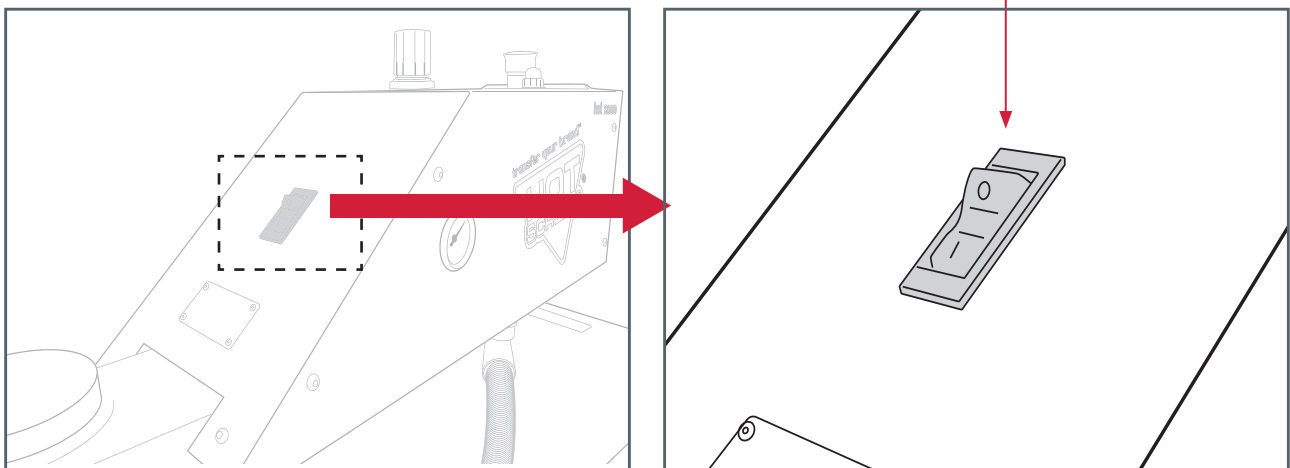
OTHER KNOWN RISKS

Decals of unknown quality and decals not intended for heat application should not be used, due to gas development and fire hazard. Only textiles that are approved by the manufacturer for the heat application of decals, can be used with the machine.

- The machine must not be covered.
- The machine must not be left in operation in unsupervised premises.
- The machine must not be washed with water, just wiped with a damp cloth.
- The machine must not be lubricated with oil or other lubricants except in the specified service purpose.

STARTING THE MACHINE - MAIN SWITCH

The machine is started by pressing the switch into the position "1". The button lights up, the microprocessor starts and the display turns on. To turn off the machine, press the switch into the position "0". The button turns off and so does the machine's display.



USING THE MACHINE

TWO-HAND GRIP

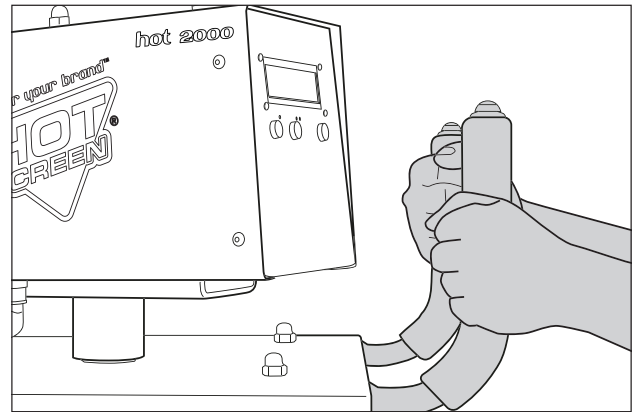
The two-hand grip is constructed so that it is necessary to press both buttons on both handles with a maximum interval of 0.2 seconds for the machine to become active and the heat plate to press down. If too much time goes by between pressing both buttons, you must release them and try again. This is to avoid crush injuries on the hands.

If both buttons are pressed at the same time, the machine becomes active. To cease the heating before the set time, push one of the two buttons. The machine then immediately ceases the heating and the heat plate rises up.

The function can be used to preheat textiles or if, for other reasons, you wish to interrupt the cycle. It is worth noting that there is a built-in guard that prevents the heat plate from descending before the

set value is reached "Temp too low"

(If the heat plate's temperature differs in more than +/- 5 degrees Celsius from the set value, the heat plate does not descend. An error message is shown on the display, "Temp too high" or "Temp too low".

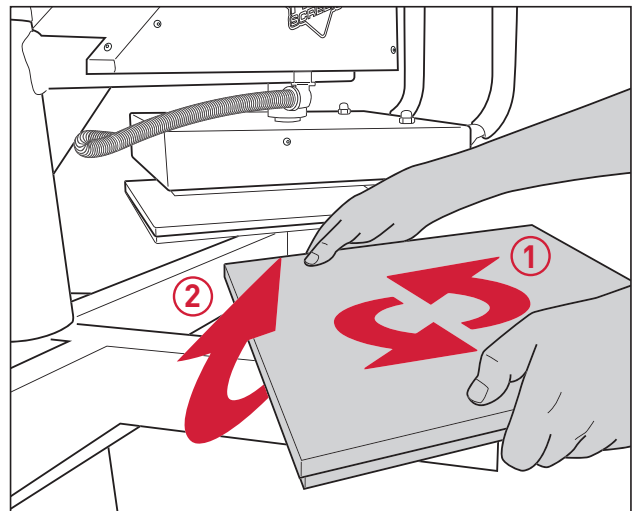


CHANGING THE WORK TABLE

When the work table shall be dismantled:

Start by turning the table counterclockwise twice, then take the back of the table and pull it upwards and towards you. When the work table shall be mounted, follow the reverse order:

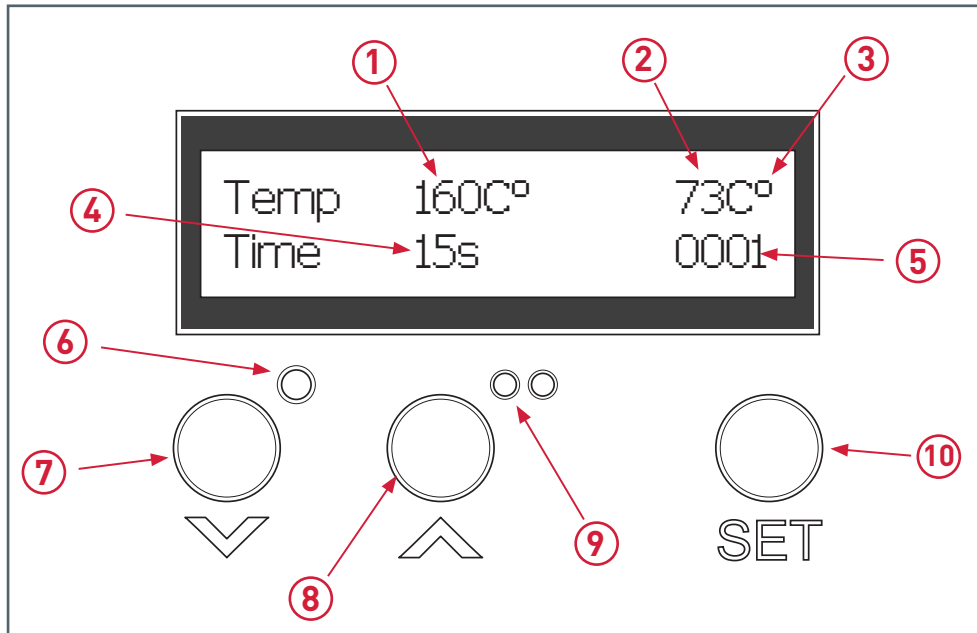
First tighten it using the machine, then turn the table clockwise twice.



PREHEATING GARMENTS

Sometimes it can be necessary to preheat/preshrink garments. This is easy to do by pressing the control button once before the set time cycle is complete, the cycle is cancelled. The display shows "Cut" and the heat plate rises to its original position.

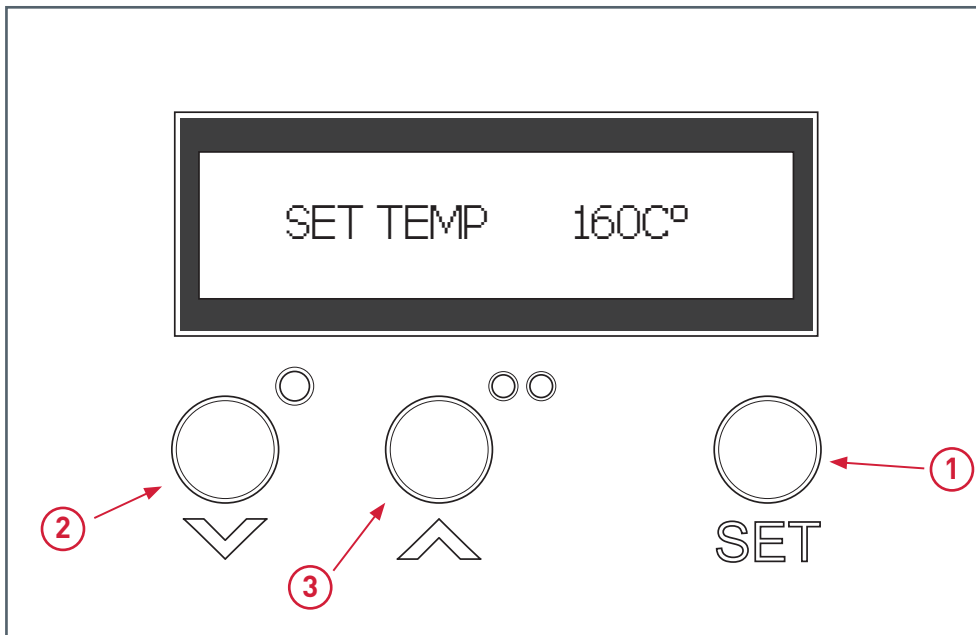
MANAGING SETTINGS



MAIN MENU - WORKING MENU

- | | |
|---|---|
| <p>1 Set temperature
Shows set temperature. (Setpoint value)</p> | <p>6 Heat indicator
Shows when the heat of the heat plate is switched on</p> |
| <p>2 Actual temperature
Shows the real temperature. (Real value)</p> | <p>7 Down arrow
Press to decrease</p> |
| <p>3 Degrees
This sign flashes to show that the electronics are active</p> | <p>8 Up arrow
Press to increase</p> |
| <p>4 Time
Shows set time</p> | <p>9 Cycle indicator
Shows if a cycle/heating is in progress</p> |
| <p>5 Counter
Shows number of completed cycles/heatings</p> | <p>10 Settings button
Push to scroll the menus</p> |

MENU FOR SETTING THE TEMPERATURE



Menu for setting the temperature

- 1 To access this menu press Set once. If you don't move any of the buttons, the menu goes automatically to the work menu.

Increase temperature

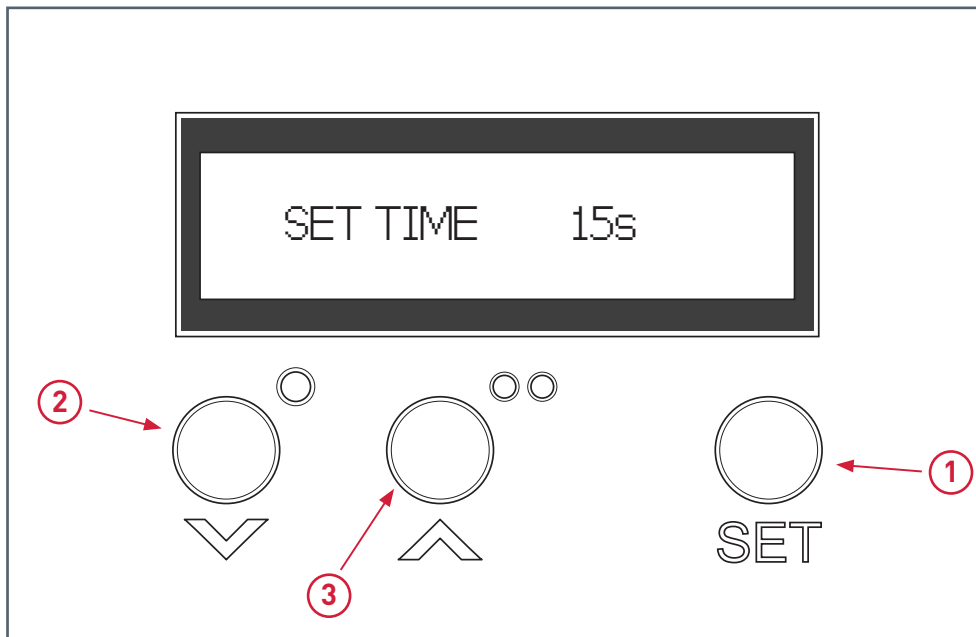
- 2 To increase the temperature, push on the up arrow once if you hold the button down, the value increases continuously.

Decrease temperature

- 3 To decrease the temperature, push on the down arrow, this too is continuous if you hold the button down.

When the menu goes back to the work menu, the set temperature will appear on the display.

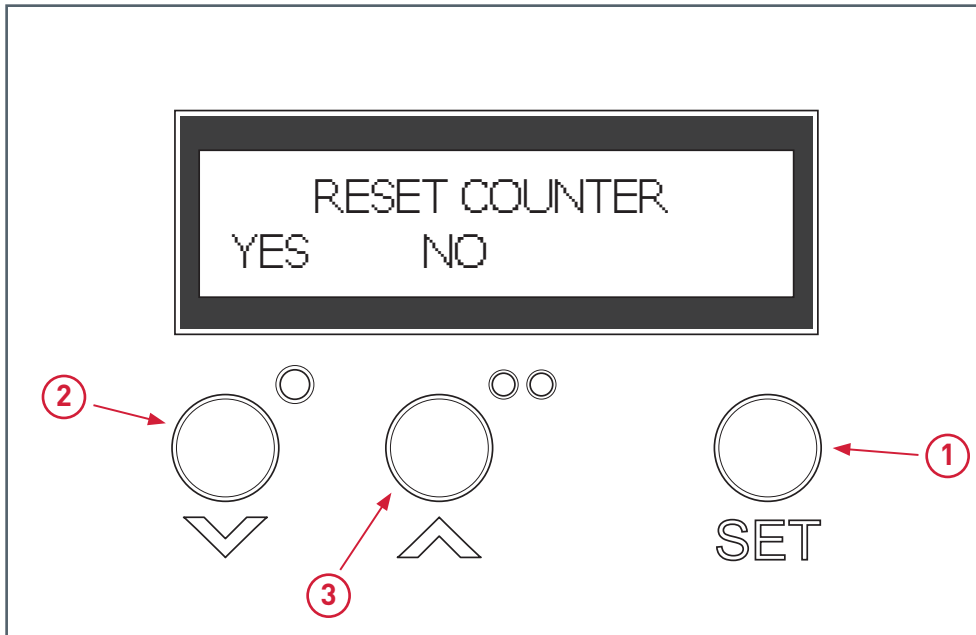
MENU FOR SETTING THE TIME



-
- 1 Menu for setting the time**
If you push the Set button twice, you will reach the setting for the time in which the heat plate shall press down on the garment.
- 2 Increase time**
To increase the time, push on the up arrow oncelf you hold the button down, the value increases continuously.
- 3 Decrease time**
To decrease the time, push on the down arrow, this too is continuous if you hold the button down.

When the menu goes back to the work menu, the set time will appear on the display.

MENU FOR RESETTING THE COUNTER



Menu for resetting

- ① If you push the Set button three times, you reach the menu for resetting the counter, the menu does **not** return automatically.
- ② If you push on the down arrow, you are saying “No” which means that you do not reset the counter, the menu now returns to the working position.
- ③ If you push “Yes” with the up arrow, you reset the counter and the menu returns to the working position, now showing “0000” in the counter.

When the menu goes back to the work menu, the reset counter will appear on the display.

PRESSURE REGULATOR

HOT 2000 is equipped with a pressure regulator and a manometer to read the pressure in the internal compressed air system.

The pressure regulator (see figure 1) is placed at the back of the left side of the top cover, the manometer (see figure 2) is placed on the left side of the same cover.

The pressure regulator is used to regulate the heating pressure on the heat plate.

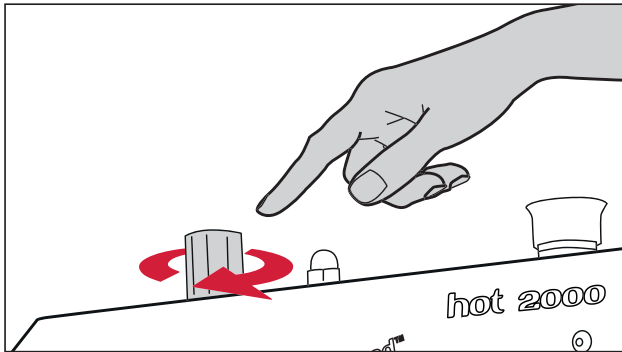


Figure 1 - Pressure regulator

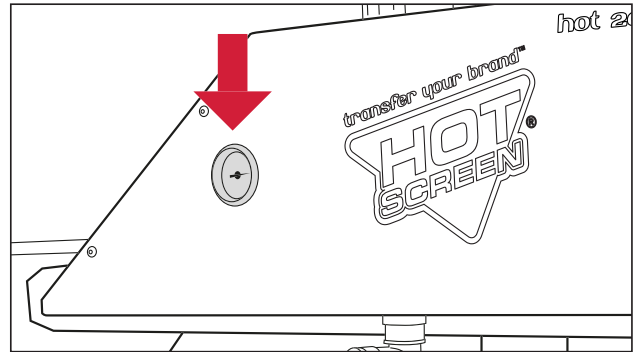


Figure 2 - Manometer

PRESS THE PLATE TO 6 BAR ON THE PRESSURE METER

Size	Area cm ²	Pressure kg/cm ²
Large plate 38x38 cm	1444	0.3
Medium plate 38x15 cm	570	0.7
Small plate 15x15 cm	225	1.9

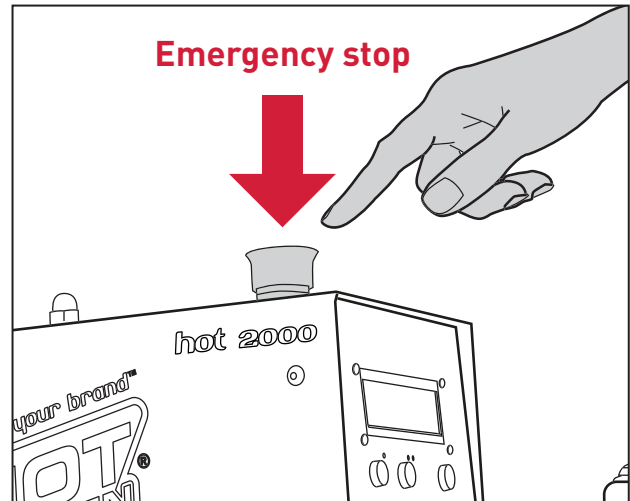
When using heat transfers manufactured by Hot Screen, 5-6 bar is a good setting that works on all plates despite the relatively large difference in pressure with different sizes on the work table.

SAFETY MEASURES

EMERGENCY STOP

The emergency stop is placed on top of the machine's housing. The emergency stop breaks all electrical circuits and the heat plate rises up. The emergency stop is reset by pulling it straight up.

Before resetting it, you must make sure that the cause of the fault has been resolved.



SAFETY WATCH "WATCHDOG"

The machine's electronics are equipped with a watch that recognises if the program or the microprocessor aren't working as they should, in that case it turns off all further functioning such as shutting down the heat plate and heating it up.

The watch is reset by turning the machine off and waiting 10 seconds to turn it on again. If the error persists, all functions will reset and a Hot Screen AB service technician should be contacted.

MAINTENANCE AND SERVICE

The machine's piston rod shaft should be lubricated to maximise its lifespan, the shaft should be lubricated at least once a week, if the machine is used for 8 hours a day.

The lubricant must be of a type that can withstand at least + 250° C. The machine is lubricated when cold. Disconnect the compressed air connection and interrupt the power, the pressure plate lowers automatically.

Apply a thin layer of grease on the whole shaft. When you connect the compressed air again, the heat plate will immediately rise up again.

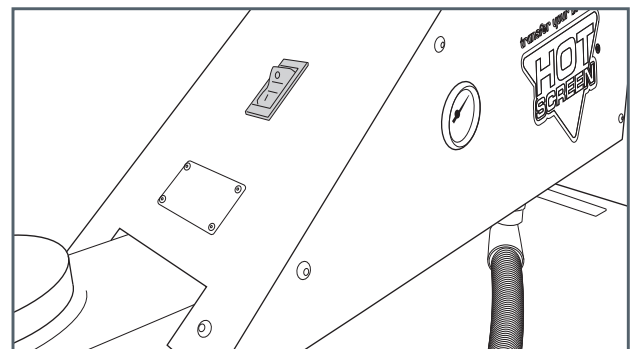
Warning for risk of crushing.

CONNECTION

At the back of the machine is the switch which also acts as a circuit breaker (10 Amp).

Make sure the power cord is not stretched when turning the top of the machine. The compressed air system of the machine is connected with a ½ " quick coupler. Make sure the compressed air cord is not stretched when turning the machine.

Attention! A water separator should be used in the connection of the machine.



TROUBLESHOOTING - HOT 2000

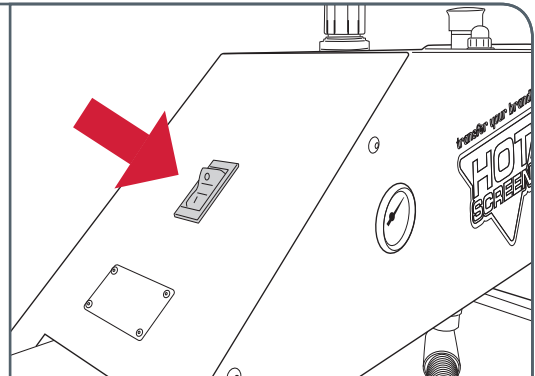
GENERAL TROUBLESHOOTING - THE MACHINE DOESN'T START

Begin by taking these measures if your Hot 2000 doesn't start.

1

Check that your Hot 2000 is on, and that the switch on the back of the machine is in the position "1".

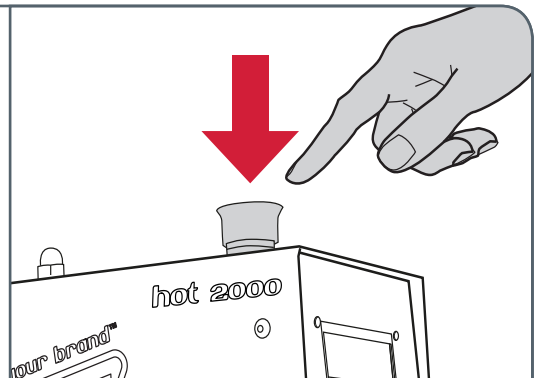
If the light on the switch or on the display doesn't turn on, check that there is power in the outlet.



2

Check that the emergency stop switch is not in the activated position (pushed down).

If the emergency stop is pushed down, turn off your Hot 2000 and pull up the emergency stop before you start the machine again.



CONTROL OF COMPRESSED AIR

If the heat iron doesn't lower when the machine is in use, check below.

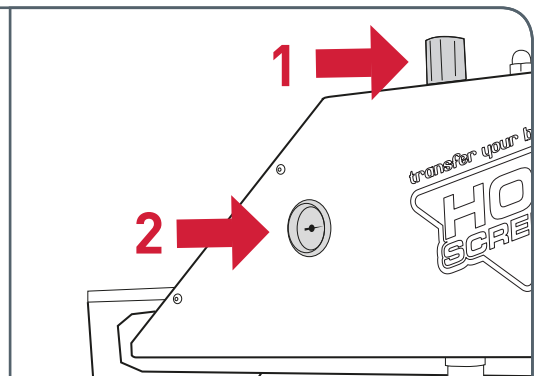
Check that there is compressed air going from your compressor to the heat press.

1. Check that the regulator is not turned off. If it is, pull it up and turn it clockwise to increase the pressure.

2. The manometer shows the actual pressure.

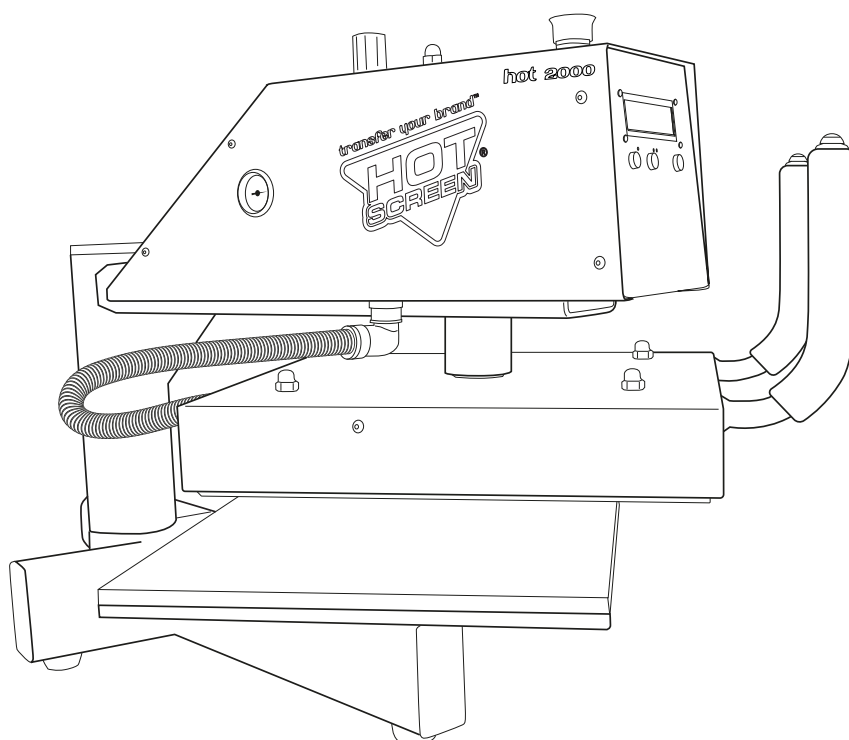
Counterclockwise = decreases pressure

Clockwise = increases pressure



IF THE PROBLEM PERSISTS, CONTACT OUR HEAT PRESS SERVICE OR THE CUSTOMER SERVICE DEPARTMENT.

HOT 2000 DATA



SPECIFICATIONS

- **Weight:** 95kg
- **Height:** 640mm
- **Width:** 1000mm
- **Depth:** 830mm
- **Effect:** 2200W
- **Voltage:** 210-240 vac 50-60hz
- **Main fuse:** 10 A delay
- **Min. pressure:** 1 bar
- **Max. pressure:** 6 bar
- **Min. heating time:** 1 sec
- **Max. heating time:** 60 sec
- **Max. temperature:** +250°C
- **Heat plate width:** 380mm
- **Heat plate depth:** 410mm
- **Large work table:** 380 x 380mm
- **Medium work table:** 50 x 380mm
- **Small work table:** 150 x 150mm
- **Noise level:** < 70 dba 1m

DELIVERY

Hot 2000 is delivered with the following:

- 1 power cord
- 1 air hose with quick coupler 4m
- 2 heating tables 380 x 380mm
- 1 heating table 380 x 150mm
- 1 heating table 150 x 150mm
- 1 manual
- 2 bolts for fastening the machine to the table

WARRANTY

1 year warranty on all the components, starting from the delivery date.
Freight, per diem, and travel expenses are charged for warranty repairs if required.

MANUFACTURER, PRODUCER

HOT SCREEN AB
Gunneshårdsvägen 2
439 74 Fjärås
Sweden
Telephone: 0300-56 89 90
Fax: 0300-779 95
Email: info@hotscreen.se

<http://www.hotscreen.se>

DECLARATION OF CONFORMITY

We,

Hot Screen AB
Gunneshårdsvägen 2
439 74, FJÄRÅS, Sweden

Declare under our sole responsibility that the product Hot 2000 Heat transfer press, to which this declaration relates is in conformity with the following EU directives

The Directive 2006/42/EC on machinery (MD)
The Low Voltage Directive (LVD) 2006/95/EC
The EMC (ElectroMagnetic Compatibility) Directive 2004/108/EC

The following harmonized standards are used:

MD:

EN 12100-1 (2003)
EN 12100-2 (2003)
EN 13857 (2008)
EN 60204-1 (2006)

LVD:

EN 60335-1
EN 60335-2

EMC:

EN 55022
EN 61000-4-2
EN 61000-4-4
EN 61000-4-5
EN 61000-4-6

Fjärås, Sweden 2017-10-01



Fredrik Skanselid
CEO - Hot Screen AB

